

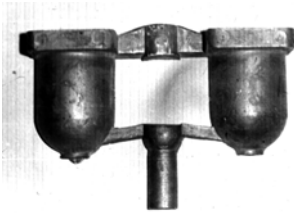
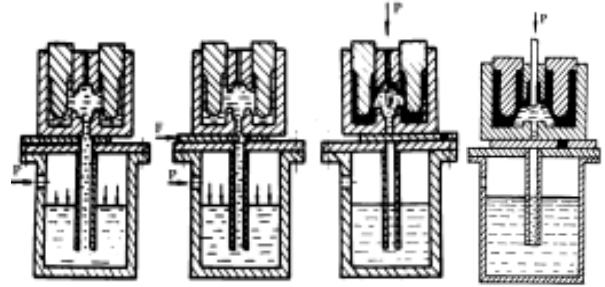


Low Pressure Casting (LPC) with Gas or Piston Recompressing

Combination of LPC process with gas and piston recompressing of metal in feeding heat centers allows to increase the range of pressure correspondingly to 0,7 and 30 MPa while applying standard LPC machines, pouring unit of which is designed for pressure of 0,07 MPa.

The casting nomenclature is significantly expanded, a casting process being mechanized and automated.

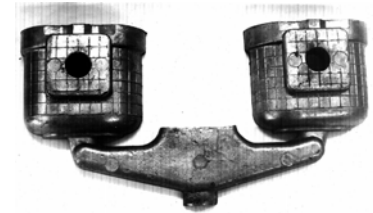
Process diagram



Fuel Pump Case



Filter Cup



Pump Cover

The highly guaranteed level of metal properties along various casting cross-sections is provided. The increase of strength is of 10-25%, of elongation that from 1.5 to 2 times, of durability under cyclic load - from 2 to 5 times, of corrosion resistance - of 1.5 times, and of hydraulic resistance is from 1.5 to 2.5 times.

The metal consumption for pouring system is decreased from 2 to 5 times with saving of electrical power from 150 to 300kWt/hour per 1 tone of casting.

AJY-03

AJY-1M

