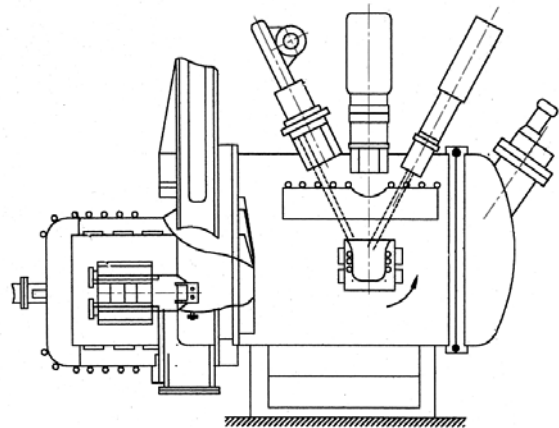
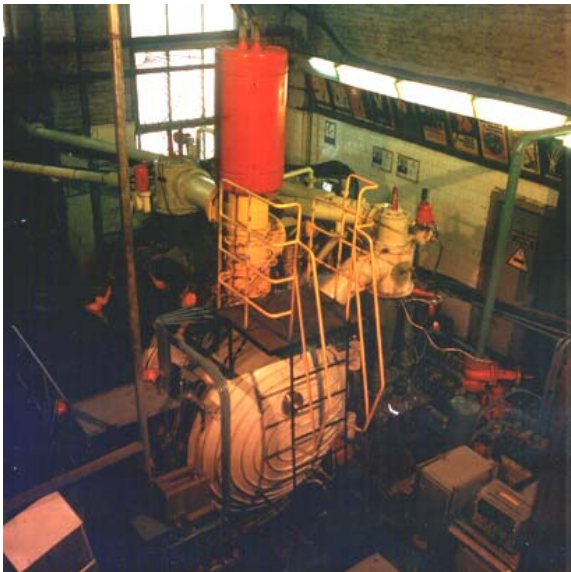




Electron-Beam Casting Installations

Electron-beam casting installations on the basis of standard vacuum induction furnaces UPPF-3M and ISV-004, as well as on the basis of vacuum arc furnace VDL-4 have been created. This permits to reduce the cost by 30 - 40% and to almost twice reduce the time of its implementation.



General view of the electron-beam casting installation on the basis of vacuum induction furnace UPPF-3M

Electron-beam casting installation on the basis of vacuum induction furnace UPPF-3M

Main parameters of the joint induction - EB installation

N	Parameters, units	Value
1	Melting chamber volume, m ³	1,5
2	Induction heating power, kW	120
3	Induction heating frequency, Hz	2400
4	EB heating power, kW	150
5	EB heating voltage, kV	30
6	Type of EB gun	Axial
7	Melting crucible volume, l	2 - 6
8	Working pressure in melting chamber, Pa	0,13 - 1,3

Please forward your proposals and suggestions to:

34/1 Vernadsky Avenue, 03680, Kiev-142, Ukraine, Physico-Technological Institute of Metals and Alloys of the National Academy of Sciences of Ukraine. Tel. (044) 444-35-15, Fax (044) 459-50-29, E-mail: metal@ptima.kiev.ua