

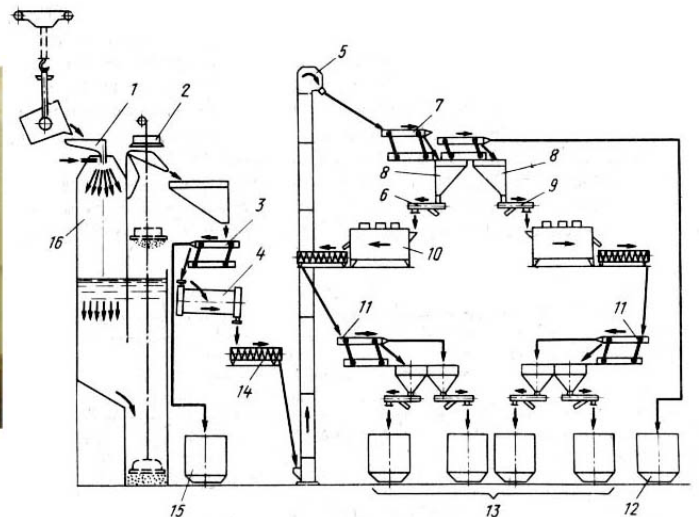


Production and effective application of metallic shots

Complexes of shots-casting equipment and high-efficiency technology allows to organize with minimal expenditures and in short term production of metallic beads of various destination: abrasives from steel and iron casting cleaning, rolling, metal construction, abrasiveas for stones cutting, fillament for foundry moulds, welding granulates, reinforcing elements for composite materials, ecologically clean shots for hunter's patrons. Positive experience of exploitation of shots-casting equipment more than 15 years.



Complexes of shots-casting equipment of type "Hail" with productivity 400-5000 tons/a are placed on 50-250 m² square with linkage to existance melting equipment, energy supplying and communications. Yield of fit shots with fraction 0.5-3.5 mm till 85% and higher. Hardness of beads may be obtained from 30 to 65 HRC.



General view and principal scheme of complex "Hail":

1 - receiver of metal, 2 - magnetic washer, 3 - screen of preliminary dispersion, 4 - drier, 5 - elevator, 6,9 - shaker feeders, 7,11 - screen, 8 - intermediate bunker, 10 - heat-treating furnaces, 12,15 - bunkers for scrap, 13 - bunkers for end product, 14 - shnek-cooler, 16 - jet chamber.