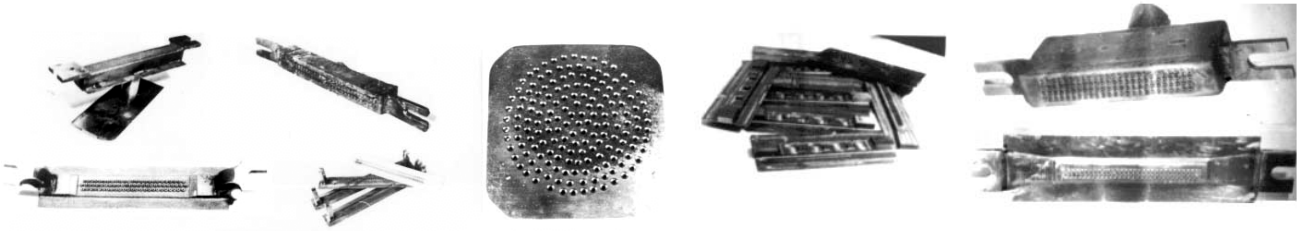


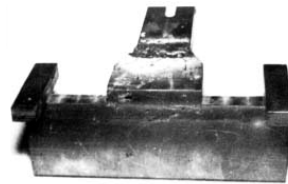


Heat resistant alloys on the base of Fe-Cr system

Alloys with containing of chromium up to 35 %



Feeders for production of fibers from basalt or glass.



*Feeder plate substituting basalt-corundum plates
with the increasing in 2 times term of exploitation*

Insertions heating the melt by electric current

Alloys with containing of chromium up to 75 %



Elements of furnace for melting of basalt.